

# Using the Mergetool to Translate an Add-On

A translation tool has been integrated in the mergetool. To get started download the database from [www.mergetool.com](http://www.mergetool.com)

## Translation Process

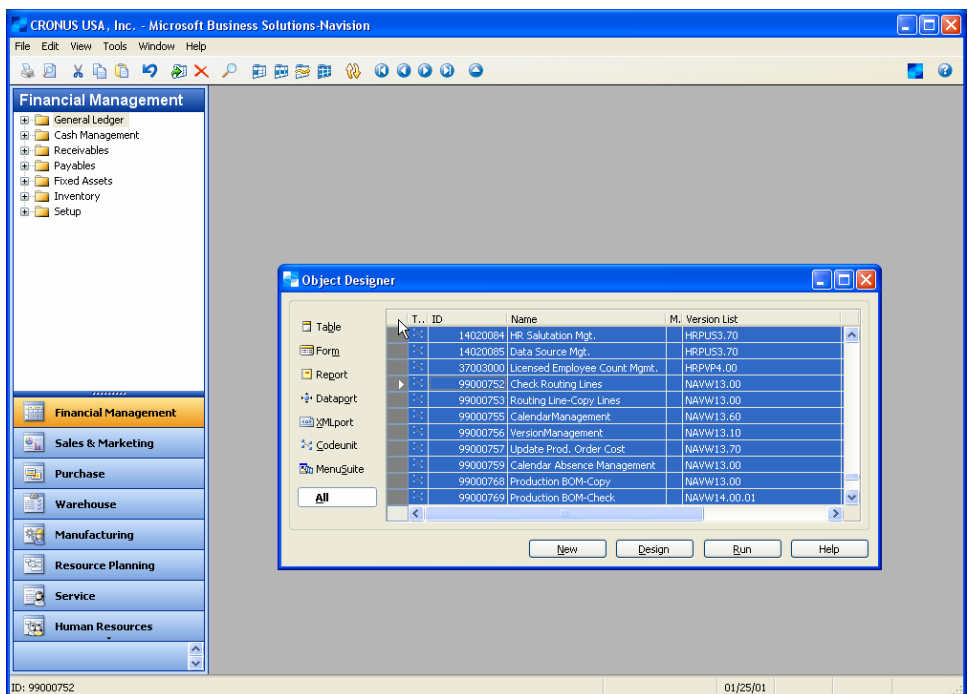
The process can be broken down in a couple of steps.

- 1: Prepare and Import Base Data in the Mergetool
- 2: Import Data and Run cleanup of the Data
- 3: Run Automatic translation
- 4: Manual Translation supported with Lookups to Base Navision Terminology.
- 5: Exporting and testing the translation.

## Prepare and Import Data in the Mergetool.

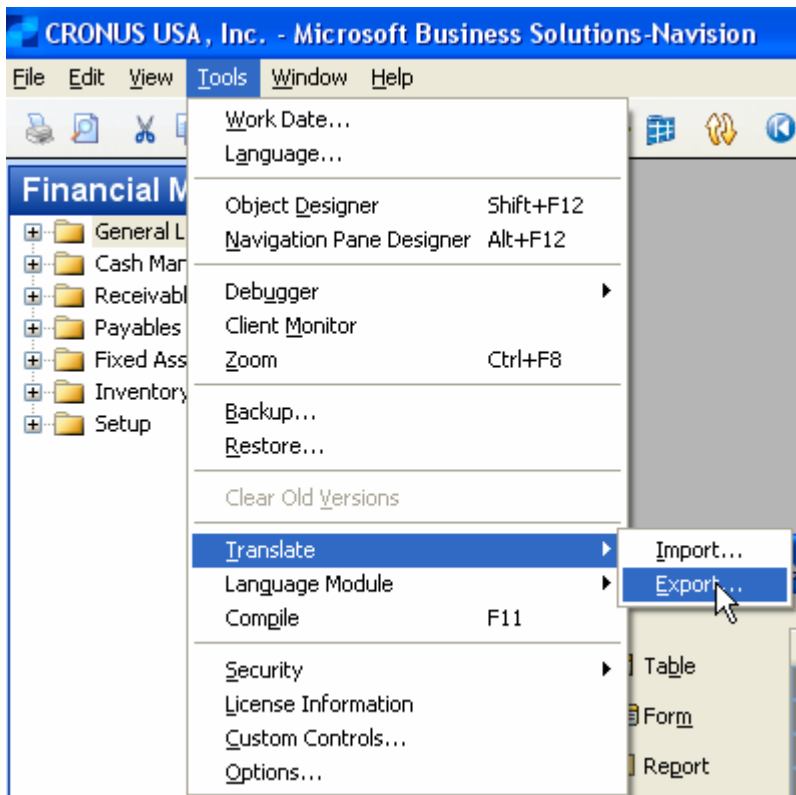
The first steps is to export the data from the Base Version of Navision. In the following example will a translation from US English to Spanish be used as an example. But the steps are similar. I would always recommend starting with the US English language that is the basis for Navision and exists in all country versions.

First open up a Base Navision Database with no Add-On modifications. In this case is an US 4.00 SP3 database used. Open the Object Designer and mark All Objects.



*The object designer is open and all objects selected.*

Use Tools Translate Export to export all the captions in the base version. It can be necessary to filter around objects where the normal developer license do not have permissions.



*The function to export all the languages in the database.*

Open the text file with a text editor.

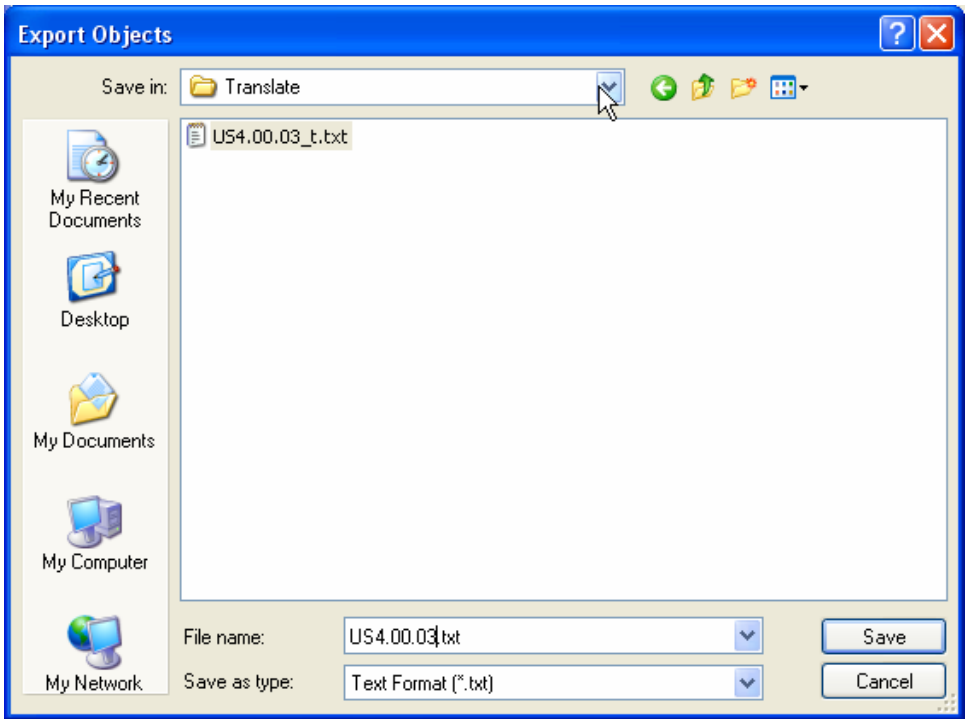
```

T3-P2818-L30:Payment Terms
T3-P8629-A1033-L999:Payment Terms
T3-P8629-A2058-L999:Términos pago
T3-P8629-A3084-L999:Modalités de paiement
T3-P8629-A4105-L999:Payment Terms
T3-F1-P2818-L30:Code
T3-F1-P8629-A1033-L999:Code
T3-F1-P8629-A2058-L999:Código
T3-F1-P8629-A3084-L999:Code
T3-F1-P8629-A4105-L999:Code
T3-F2-P2818-L30:Due Date Calculation
T3-F2-P8629-A1033-L999:Due Date Calculation
T3-F2-P8629-A2058-L999:Fecha 1er vencimiento
T3-F2-P8629-A3084-L999:Calcul date d'échéance
T3-F2-P8629-A4105-L999:Due Date Calculation
T3-F3-P2818-L30:Discount Date Calculation
T3-F3-P8629-A1033-L999:Discount Date Calculation
T3-F3-P8629-A2058-L999:Fecha cálculo dto. P.P.
T3-F3-P8629-A3084-L999:Calcul date d'escompte
T3-F3-P8629-A4105-L999:Discount Date Calculation
T3-F4-P2818-L30:Discount %
T3-F4-P8629-A1033-L999:Discount %
T3-F4-P8629-A2058-L999:% Descuento
T3-F4-P8629-A3084-L999:% escompte
T3-F4-P8629-A4105-L999:Discount %
T3-F5-P2818-L30:Description
T3-F5-P8629-A1033-L999:Description
T3-F5-P8629-A2058-L999:Descripción
T3-F5-P8629-A3084-L999:Description
T3-F5-P8629-A4105-L999:Description

```

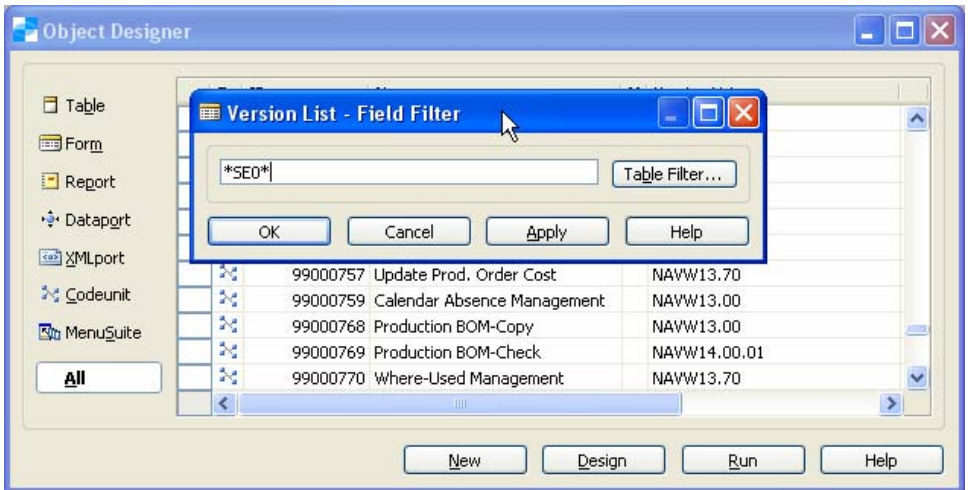
*A sample section of the exported languages. The -Axxxx- is the language code. -A1033- = ENU (English US) -A2058- = ESM (Spanish Mexico) -A3084- = FRC (French Canada) -A4105- = ENC (English Canada) To get a complete list can it be found on the internet.*

The next step is to export all the objects from the Database to a textfile. Again can it be necessary to filter around objects with no permissions in the license.



*The File Export Dialog, Remember to select the Text Format.*

Now open the database with the Add-On that should be translated. Filter on all the objects that has been modified by the add-on.



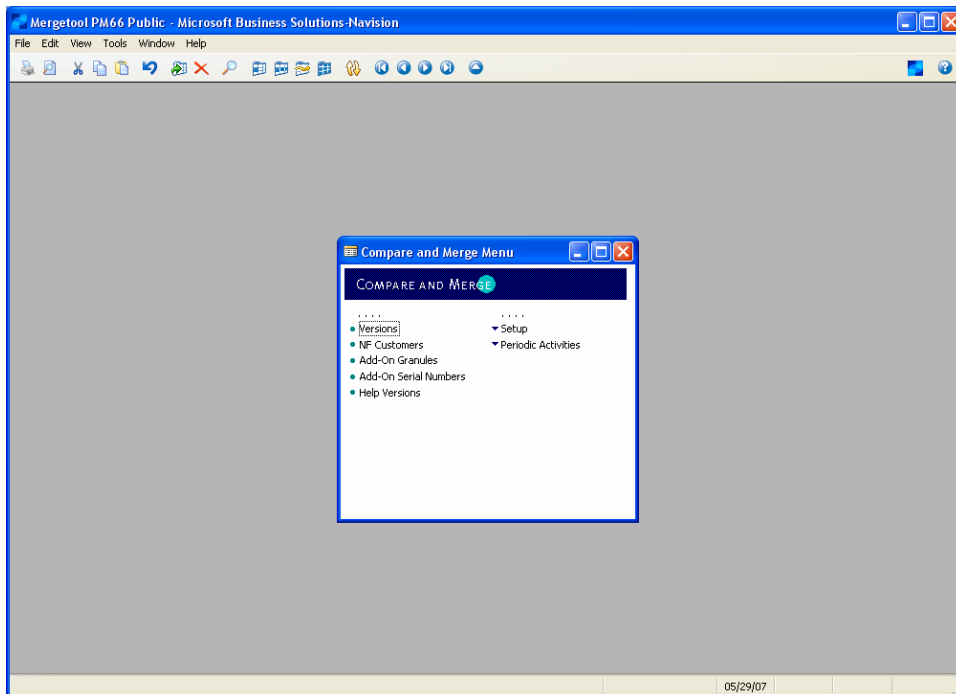
*Filter for only the objects within the Add-On.*

Export the Translation Text file and the Objects in fob and text format.  
The following files should now exist.

Name	Size
SEO.52.10 in US4.00.03 database.fdb	200,000 KB
SEO.52.10 in US4.00.03.fob	29,736 KB
SEO.52.10 in US4.00.03.txt	20,045 KB
SEO.52.10 in US4.00.03_t.txt	3,848 KB
US4.00.03.txt	69,378 KB
US4.00.03_t.txt	16,340 KB
US 4.00.03 database.fdb	200,000 KB

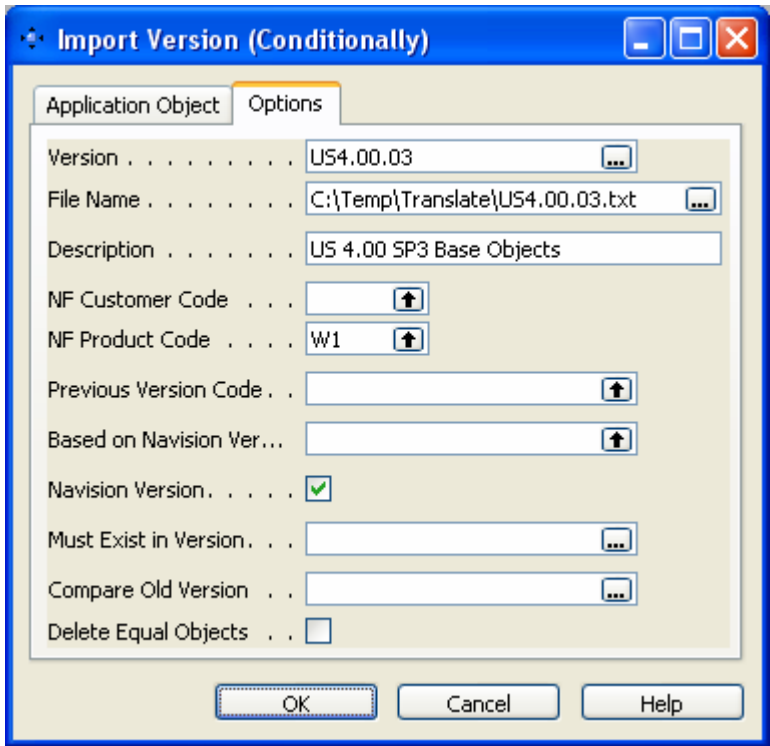
*The files exported and the 2 databases with the base and add-on code.*

Now download the latest version of the Mergetool from [www.mergetool.com](http://www.mergetool.com)  
Open the database and expand it to at least 1 GB. At the same time ensure the client is running with at least 256 MB of Database Cache.



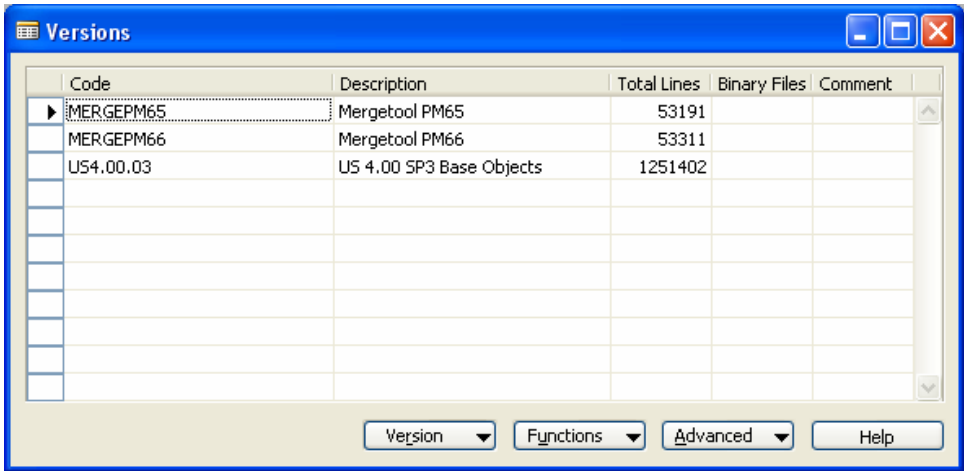
*The main menu in the Mergetool 2.6 style.*

Now is it time to import the base objects into the database.  
 Open Versions and select Functions. Import Object Textfile.



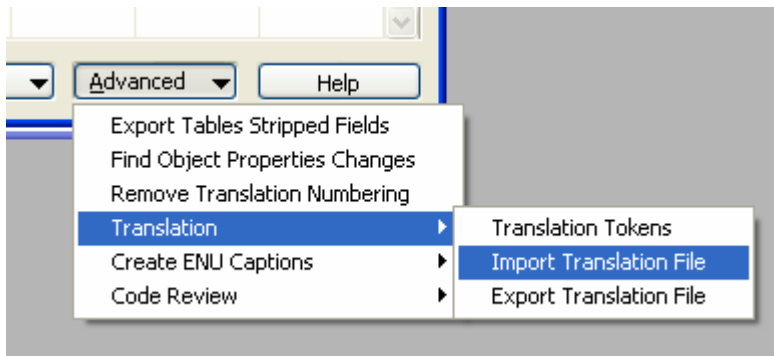
*The required information has been entered. Be careful to remember the Navision Version checkmark.*

Click OK and import the objects.



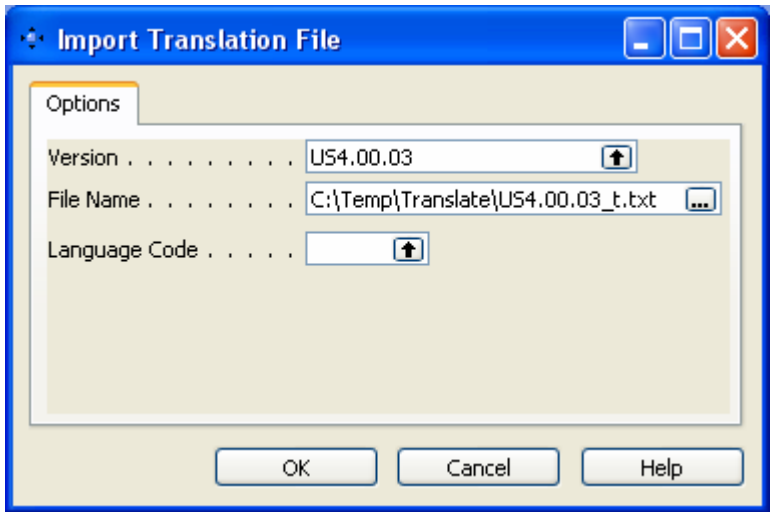
*The version has been imported. A comment about some not complete lines was shown before this. This is not a problem for the translation.*

Now select Advanced, Translation, Import Translation File



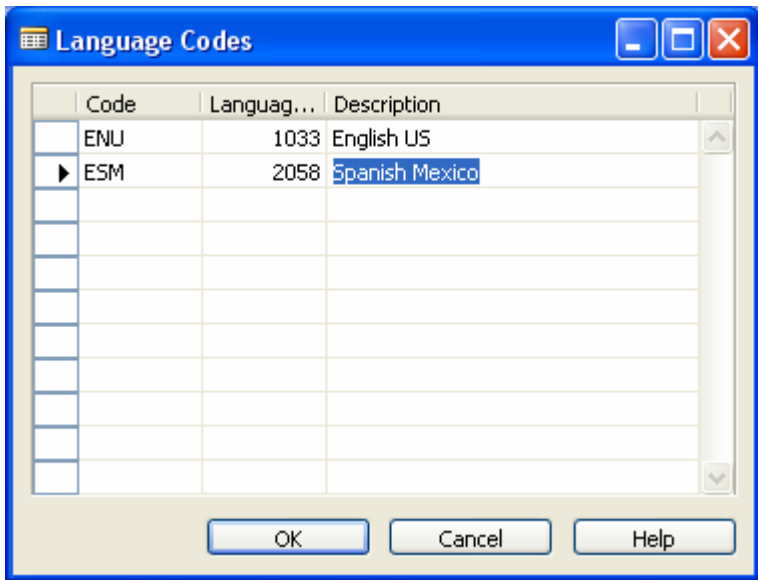
*The functions under Translation to Import and Export.*

Select the Version and filename. The filename default come up as the wrong file select the translation.



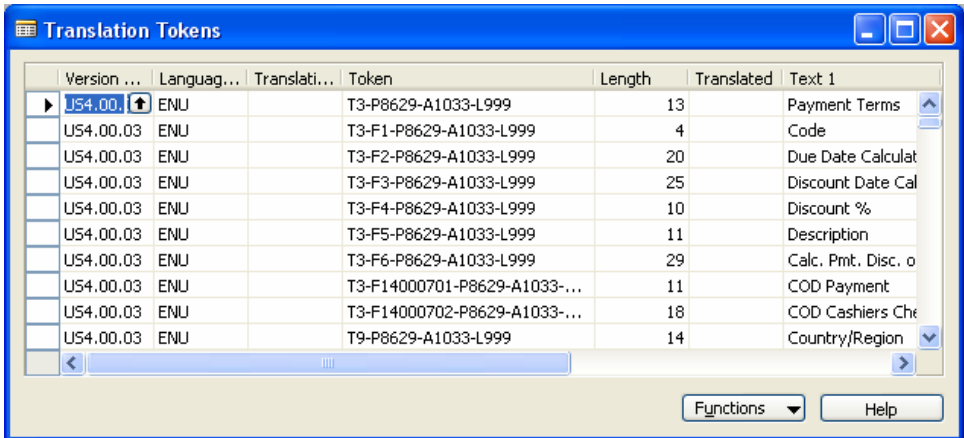
*The file with the translation is different than the normal objects file.*

Lookup in the Language Code and create the ENU and ESM with the right language number.



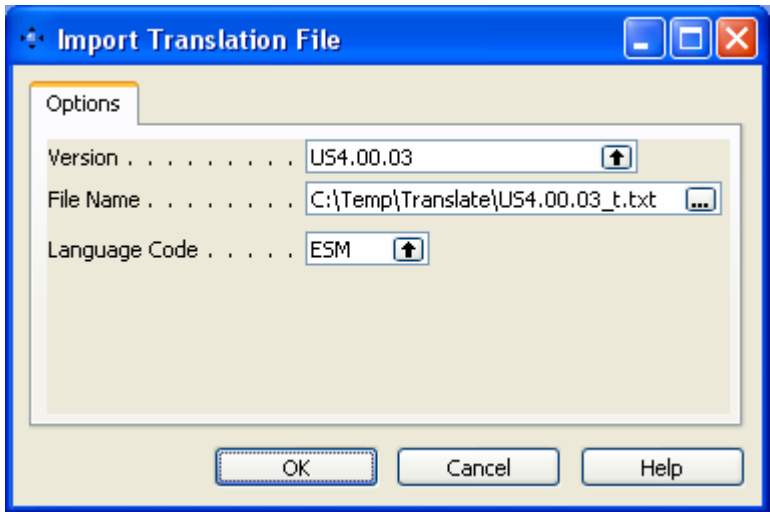
*Two versions created. The Language ID must be according to the Translation textfile.*

Select the ENU and start the import.  
Open Advanced, Translation, Translation Tokens to view the result.



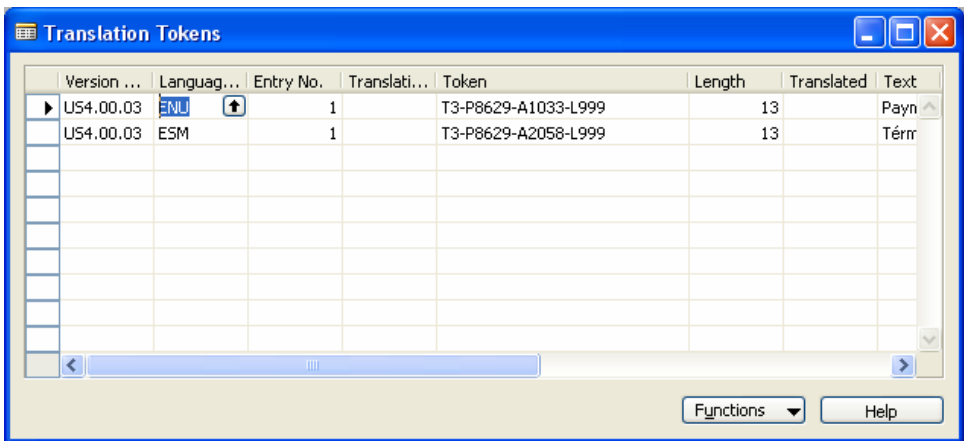
*The imported tokens. The "Token" is a reference for a unique location in Navision. Like the T3-F1-P8629-A1033-L999 means Table 3, Field 1 Property 8629 (Caption), Language 1033 (ENU) and max length 999 characters.*

Now Import the same for the Spanish version using Advanced, Translation, Import Translation File.



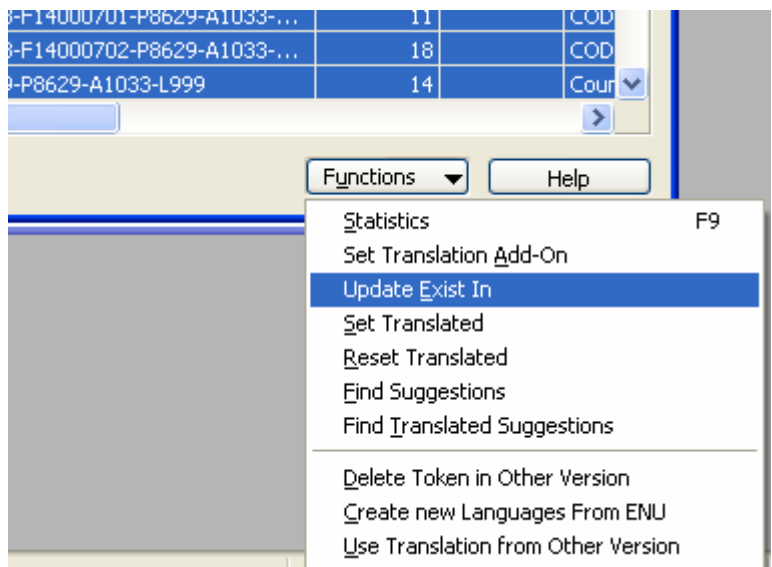
*The request form has been filled out with the Spanish text.*

Click OK to run the Import.  
Open the Translation Tokens. Show the column "Entry No.". Filter on "Entry No." = 1.



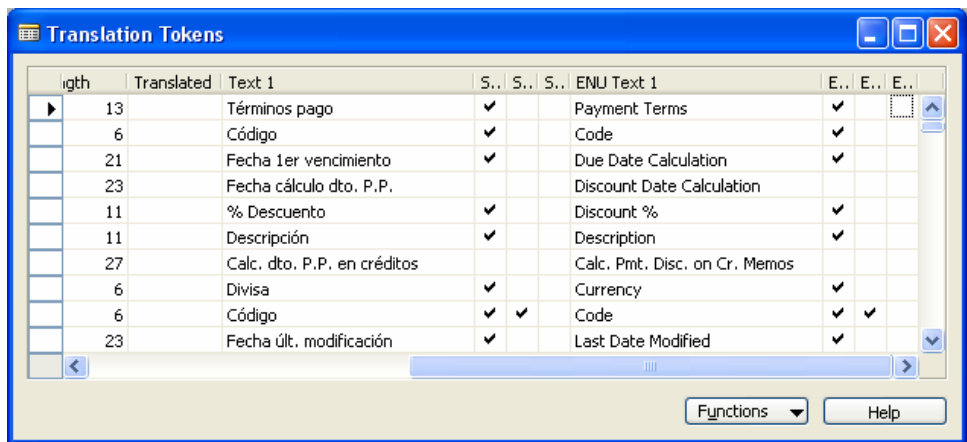
*The same "Token" exists.  
Only the language code is different.*

The Spanish and English text has been imported. This will serve as a base for the translation.  
 Remove the filter on the “Entry No.” again. Select All Lines.  
 Use the Functions, Update Exists In. This will run for a while with no progress bar. Just be patient.



*The update Exist In function will calculate some fields on the Translation Tokens. The fields can then be used for filtering during the translation process.*

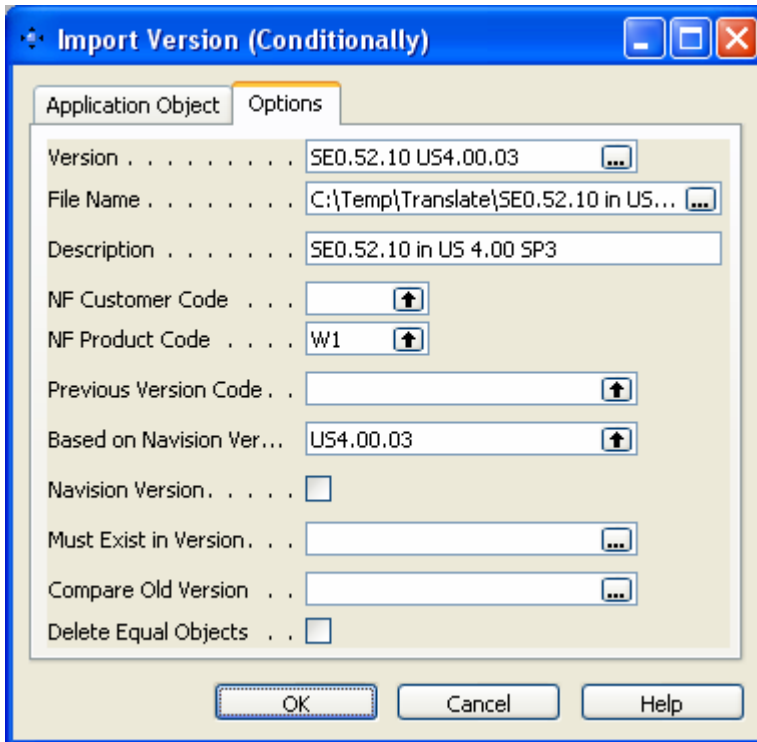
After the update has been run will the screen look like this.



*The field “Same Exist in Version” (first “S”) tells the same text is used in the same language. “Same Exist Earlier in Version” This field can only be checked when “Same Exist in Version” is checked, but will not be for the first occurrence. “Same Exist in Other Version” will be checked if the exact text exists in another version. The same fields exists for the ENU version too.*

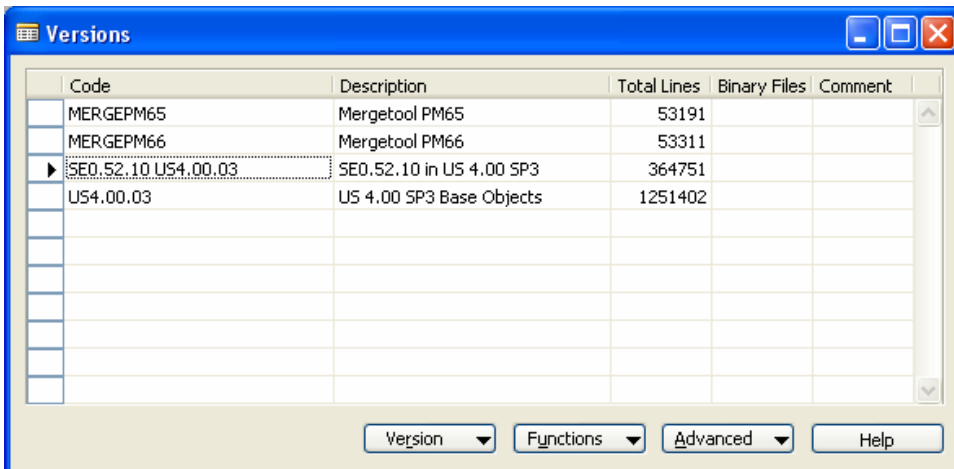
## Import Data and Run cleanup of the Data

Now is it time to import the add-on version into the Mergetool. Use Functions, Import Object Textfile.



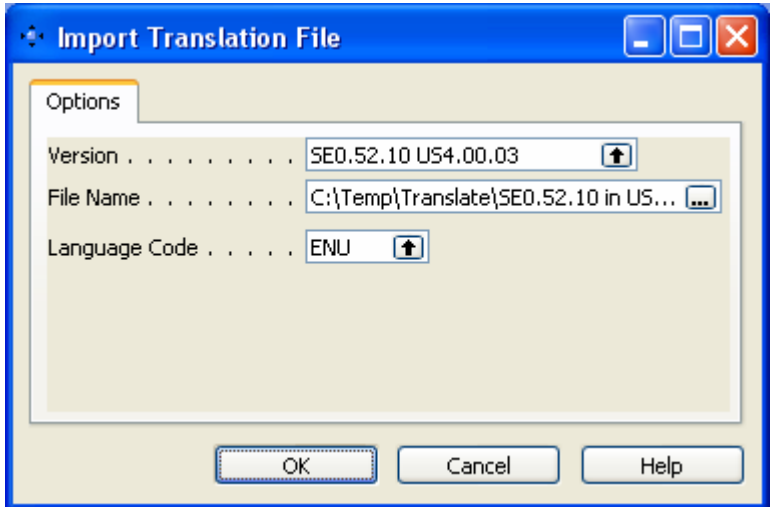
*A new version of the Add-On is getting imported. The version is marked as being based on the US 4.00.03 version, but that is not required.*

Click OK to run the Import.



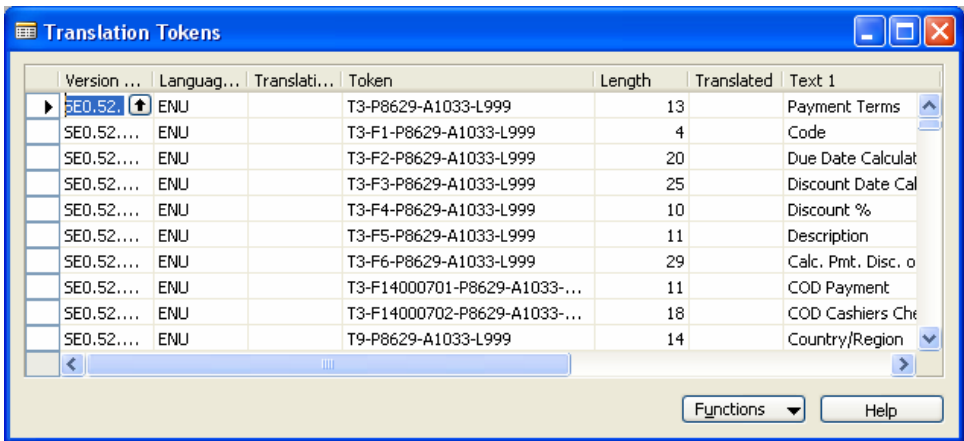
*The new version has been imported.*

Use Advanced, Translation, Import Translation File to import the Add-on texts for ENU.



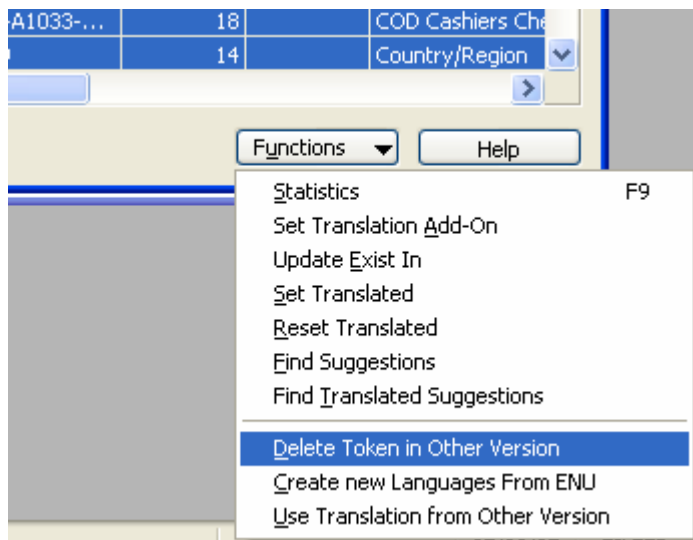
*The Request form has been filled out with the required information. Remember to change the filename.*

Click OK to run the import.  
Open the Advanced, Translation, Translation Tokens



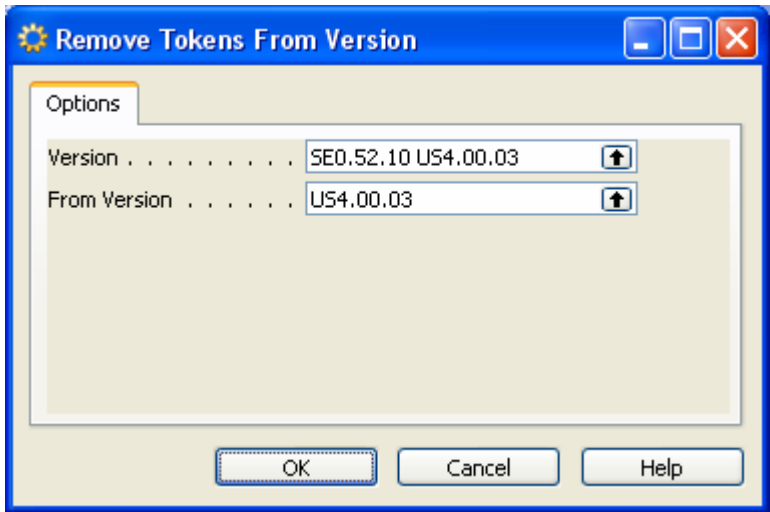
*The new ENU Tokens has been imported to the database.*

Select all records.  
Select Functions, Delete Token in Other Versions to delete all the tokens imported from the Base Navision with the Add-On.



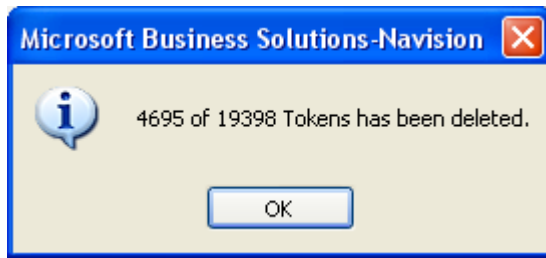
*The Functions menu on the Translation Tokens.*

Enter the From Version by lookup to the Version List.



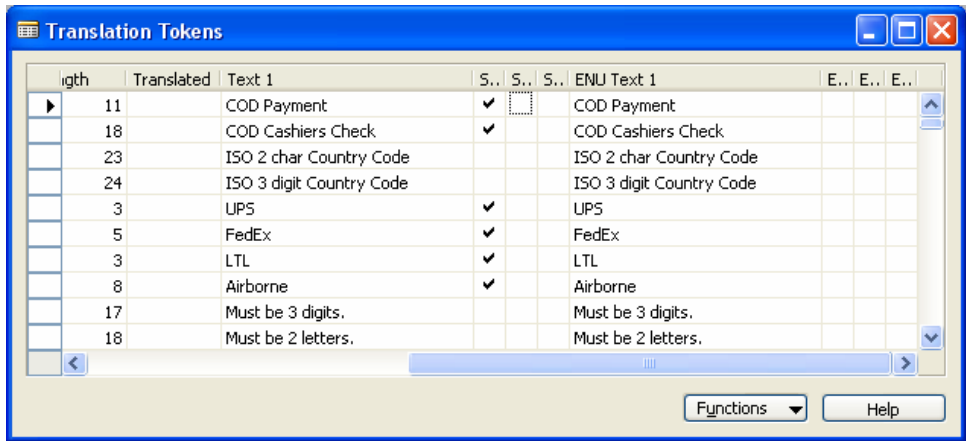
*The version US 4.00.03 has been selected to removed Translation Tokens that exist in the other version. This will only have the added texts left in this version.*

Click OK



*The status tells that 4695 tokens existed from the base Navision version*

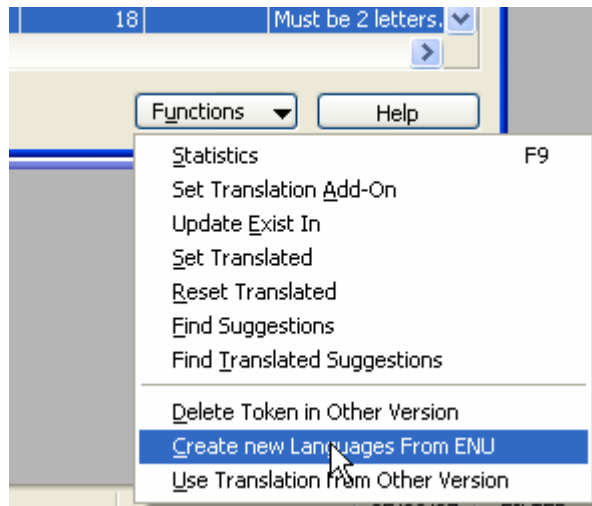
Use the Functions, Update Exists In.



*The fields have been checked to be used for filtering during translation.*

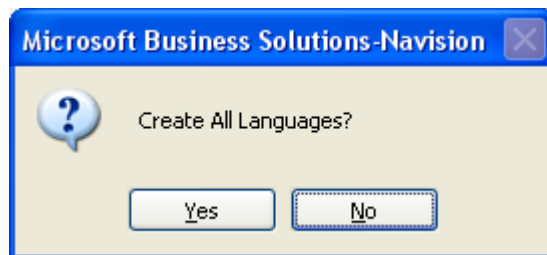
## Run Automatic translation

Use Functions, Create New Language from ENU.



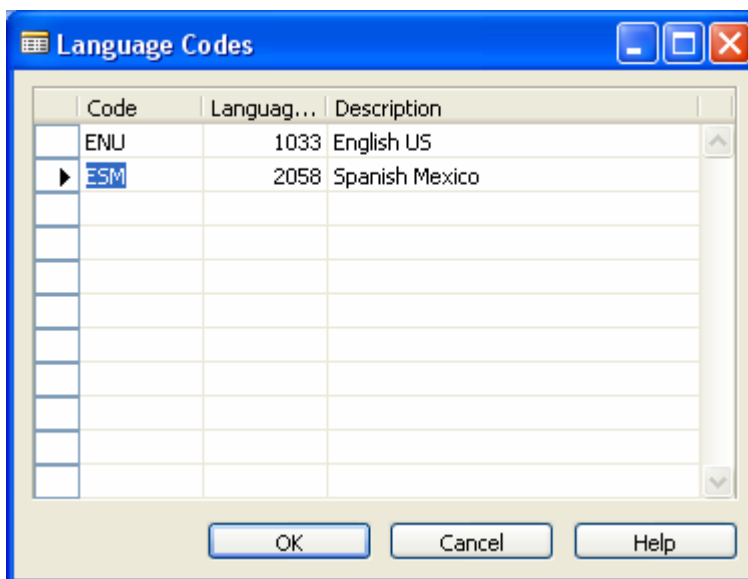
*The function to create a new language from the ENU. No texts will be translated, but the untranslated tokens will be created.*

Answer No to the Question about creating all languages.



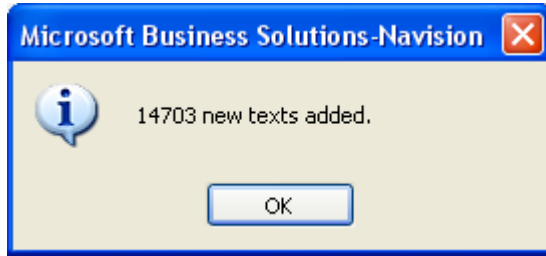
*The question to create all language. This is normally not required.*

Select ESM and click OK.



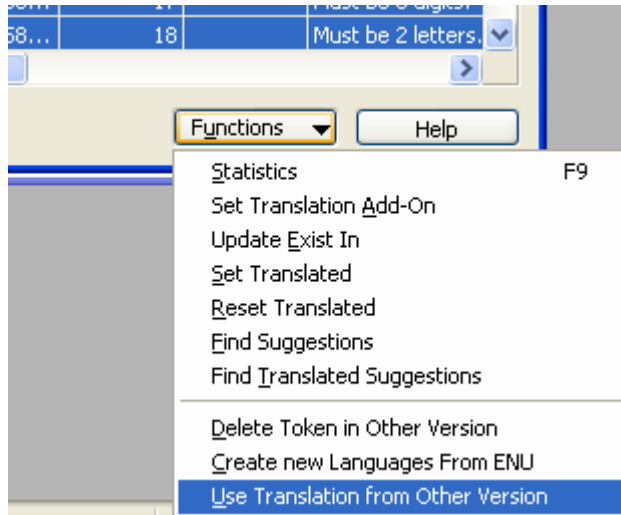
*The language Codes window. This is the relation between the Code and the Language ID used by the text export/import.*

The new Language is created. Currently with ENU Texts.



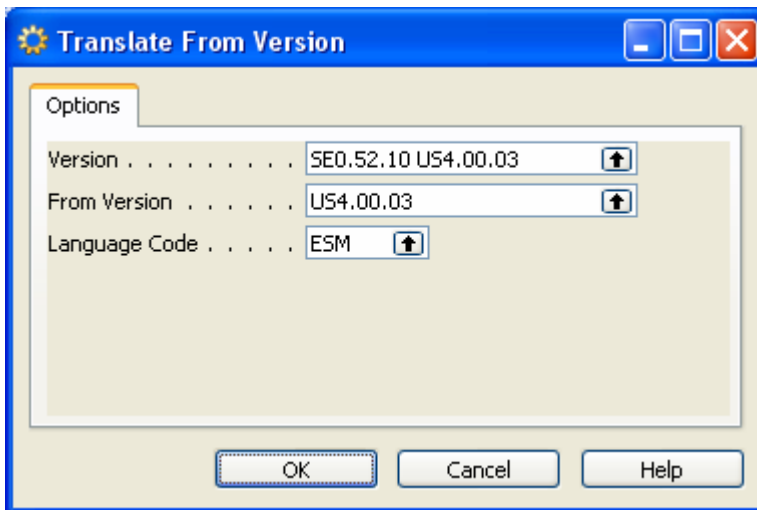
*The new Translation Tokens has been created 14703 text to translate.*

Filter on the Language Code ESM.  
Use Functions, Use Translation from Other Version.



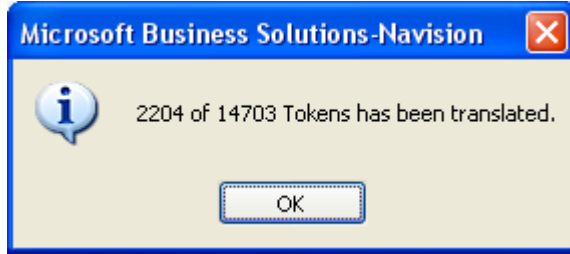
*The function to Use Translation from Other Version.*

Enter the information in the Request Screen.



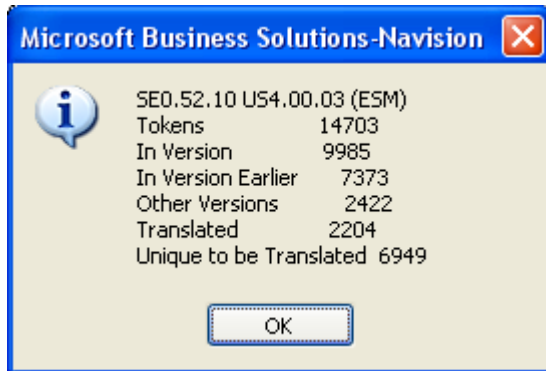
*The US4.00.03 version is used for finding translations. First will it search for the exact text from the ENU version after that will it find the translation from the ESM version (by using the Token) and change the "Text 1" and translated field. Only not translated fields will be changed.*

Click OK to use the translation.



*2204 easy ones. When designing/coding the application should it be considered using field names, messages and error texts that already exists in base Navision. This will reduce the translation task a lot.*

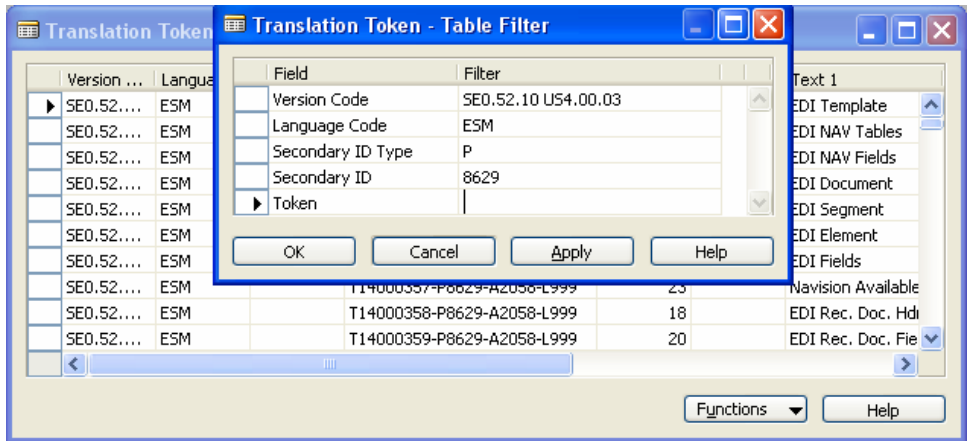
Now filter on the field "Same Exist Earlier in Version" = No.  
Use the Functions, Statistics to view the remaining to translate.



*The statistics showing 6949 texts to go.*

## Manual Translation supported with Lookups to Base Navision Terminology

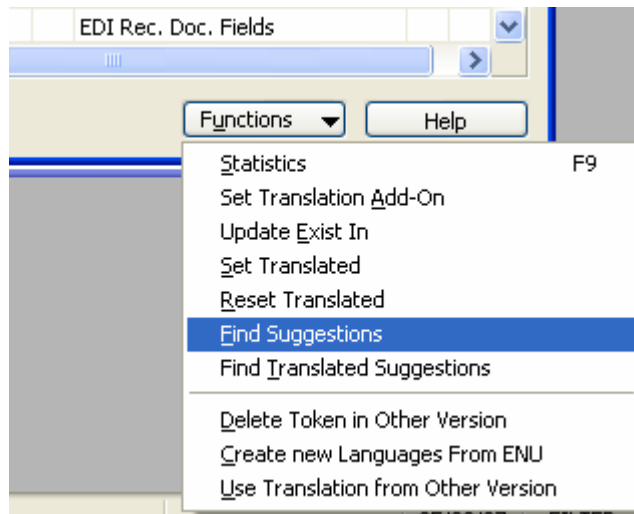
The automatic part of the translation is now done. The remaining tokens need to be translated manually. The translation should start with the Object Captions starting with the table names. To only show those filter on “Secondary ID Type” = ‘P’ and “Secondary ID” = 8629.



*Filtering on the translation tokens. Several fields exist that make filtering easier. These fields are not shown on the form.*

When translating it is very important to use the same words already used in Navision. Manual translation without using lookups should only be done in very limited amount. When translating manually is the risk of “inventing” new terminology or inconsistency much higher.

Use the Functions, Find Suggestions to show possible translations. The translation from base version will be used to show similar translations.



*The functions to Find Suggestions by looking in the base Navision terminology*

The similar texts are shown.

Version ...	Languag...	ENU Text 1	Text 1
US4.00.03	ESM	the BizTalk purchase credit m...	el abono de compra de BizTalk.
US4.00.03	ESM	,A-Anniversary,B-Bonus,E-Sep...	,A-Aniversario,B-Bonus,E-Sep...
US4.00.03	ESM	,Debit,Credit	,Debe,Haber
US4.00.03	ESM	,Immediately,1 Week Notice,...	,Inmediata,1 semana de antel...
US4.00.03	ESM	,Order,Invoice,Credit Memo,...	,Pedido,Factura,Nota crédito,...
US4.00.03	ESM	,Payment,Invoice,Credit Mem...	,Pago,Factura,Nota crédito,D...
US4.00.03	ESM	,Payment,Invoice,Credit Mem...	,Pago,Factura,Nota crédito,R...
US4.00.03	ESM	,Quote,Order Confirmation,In...	,Cotización,Confirmación pedi...
US4.00.03	ESM	,Quote,Order Confirmation,In...	,Cotización,Confirmación pedi...
US4.00.03	ESM	,,Invoice,Credit Memo	,,Factura,Nota crédito
US4.00.03	ESM	and the number of credit mem...	y el número de nota/s de crédit...

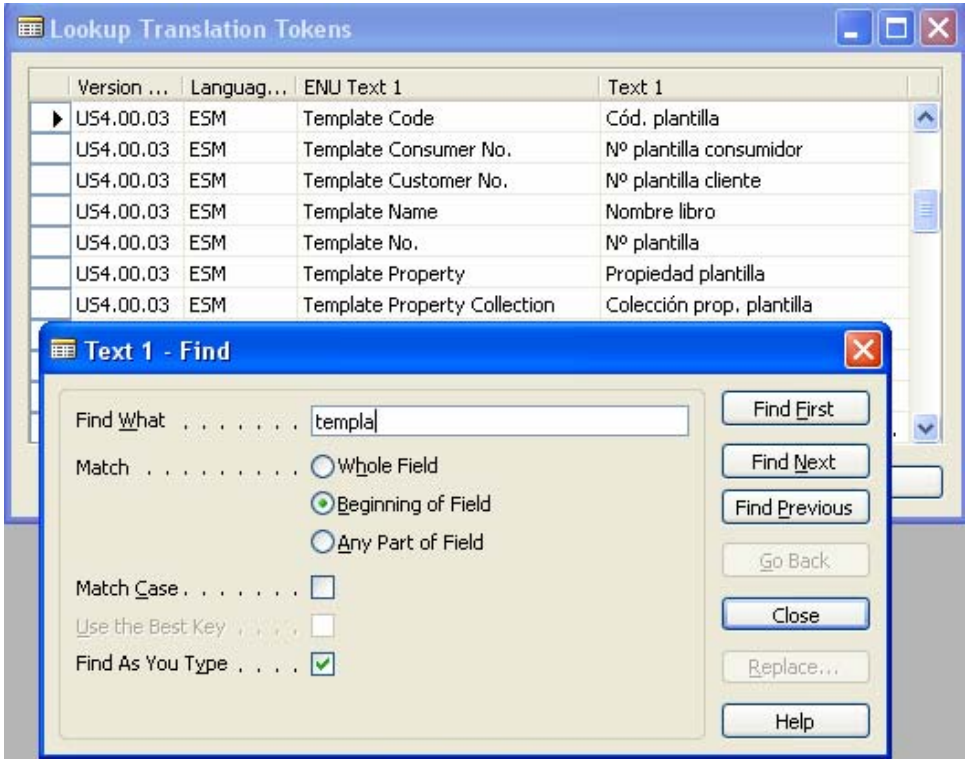
*The list of texts that contain parts of the ENU version and the same ESM text.*

The filters applied are limiting the records shown. The filter for the text is build with each word.

Field	Filter
Text 1	*@edi* *@template*
Version Code	US4.00.03
Language Code	ENU
Same Exist Earlier in V...	No

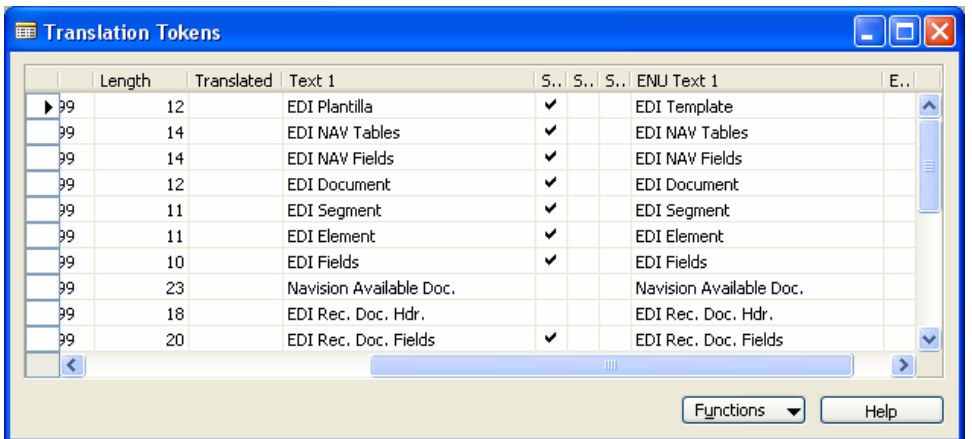
*The filtering. It can sometimes be useful to change the filter to only show part of a name. Certain parts of the texts will not be filtered like "Code" and "No".*

Start typing “Template” in the field “ENU Text 1” to find the first text starting with template.



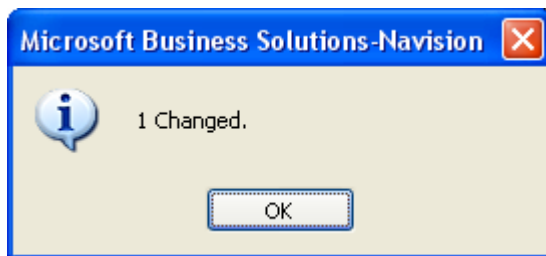
The result with Find As You Type showing all the texts starting with Template.

The name used in Navision is “Plantilla” for “Template”. It then needs to be combined with the EDI. Use Copy Paste to copy the value. Edit the “Text 1” with the new value.



The new value has been edited in the “Text 1” field.

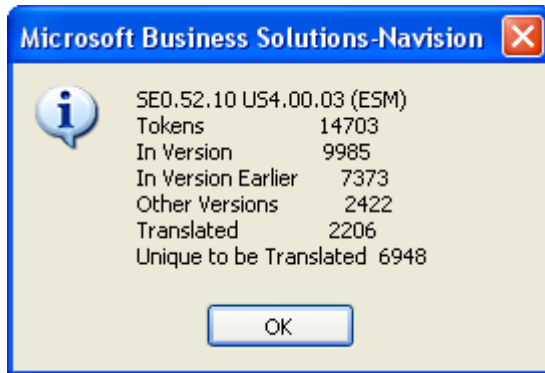
After leaving the field will a comment tell how many other fields was changed.



1 other token is changed with the same text.

Change the field “Translated” to Yes. Again is the message shown that more tokens have been affected.

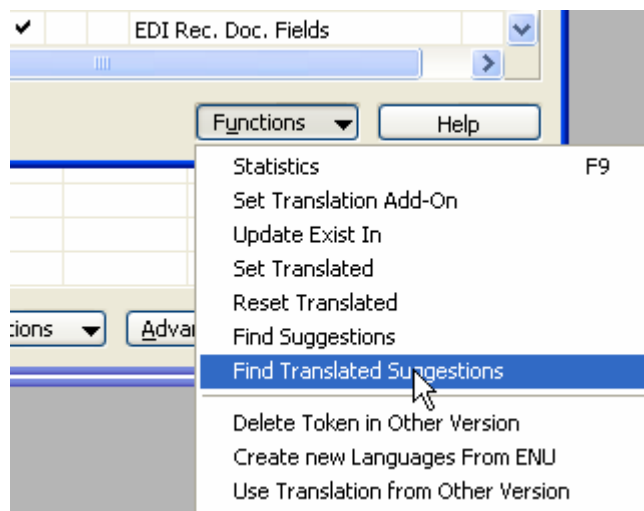
It is sometimes useful to finish working with a certain kind of text before continuing. But else can the same process be used to translate all the other tokens. After finishing translating the table would it be good to print a “Terminology List” by copy paste to Excel with all the translated objects names. This can be used for the further translation. After translating the table name is the statistics showing 1 less to translate.



*1 less translation and 2 more translated.*

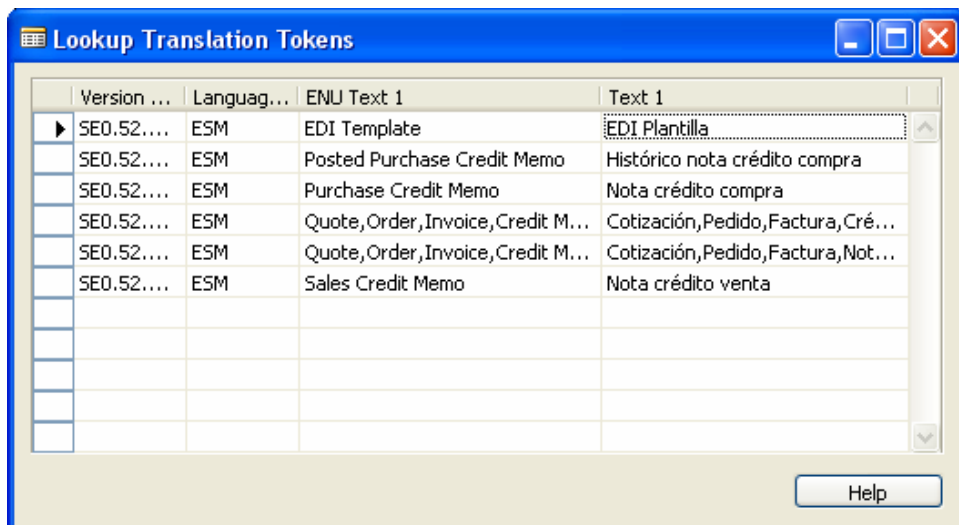
When a good part of the translation has been done is it possible to use the translated tokens for lookup. This can be very useful when writing error messages or similar.

Use Functions, Find Translated Suggestion to open the translated window.



*The function to show the already translated texts.*

The window with the translated texts appears. From here can texts also be copied with copy/paste.



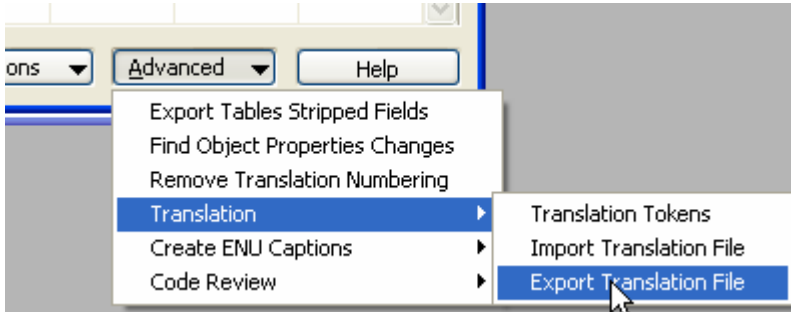
Version ...	Languag...	ENU Text 1	Text 1
SE0.52....	ESM	EDI Template	EDI Plantilla
SE0.52....	ESM	Posted Purchase Credit Memo	Histórico nota crédito compra
SE0.52....	ESM	Purchase Credit Memo	Nota crédito compra
SE0.52....	ESM	Quote,Order,Invoice,Credit M...	Cotización,Pedido,Factura,Cré...
SE0.52....	ESM	Quote,Order,Invoice,Credit M...	Cotización,Pedido,Factura,Not...
SE0.52....	ESM	Sales Credit Memo	Nota crédito venta

*The translated texts. Some of the automatically translated appear too.*

## Exporting and testing the translation

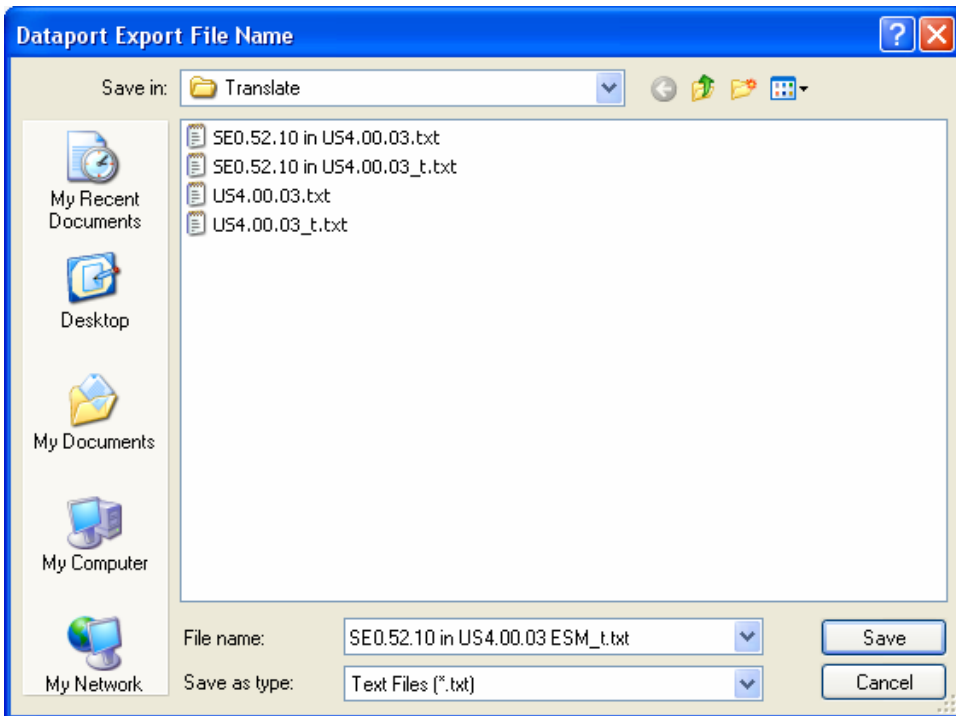
It can be useful during the process to export the translated text and import them into the database for testing.

From the Version List use Advanced, Translation, Export Translation File



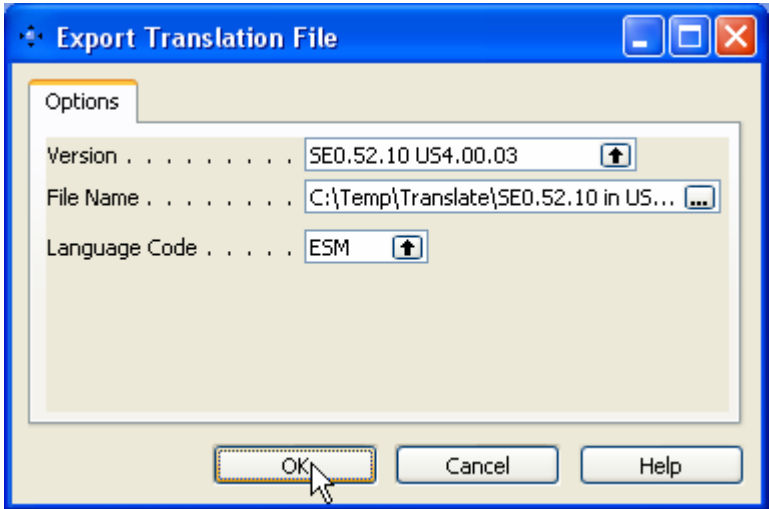
*The export menu option for the translation tool.*

Select a new Filename by using the assist edit.



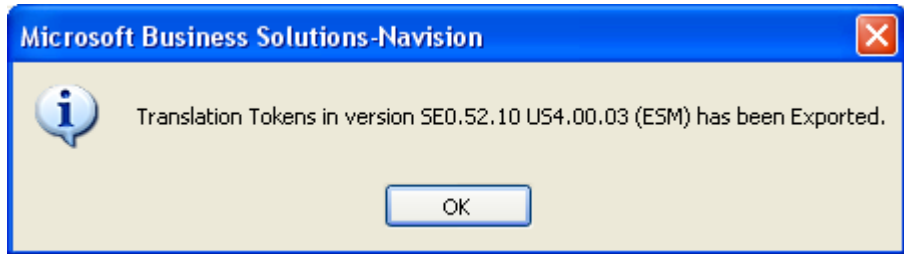
*The new filename is entered.*

Select the "Language Code".



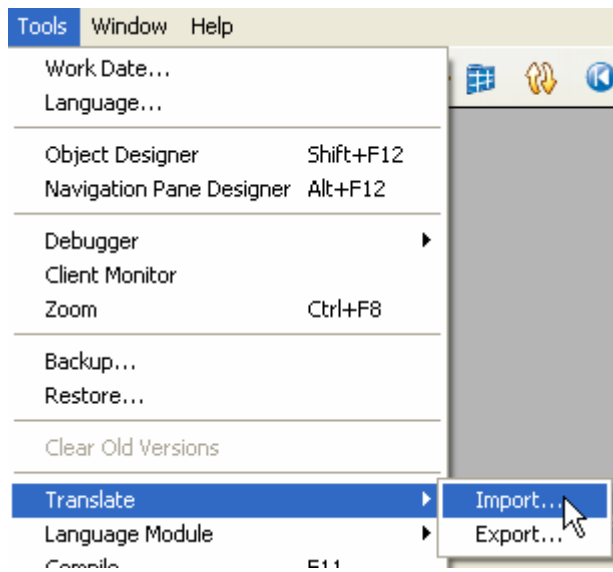
*The Language Code has been filled in.*

Click OK to Export the translation file.



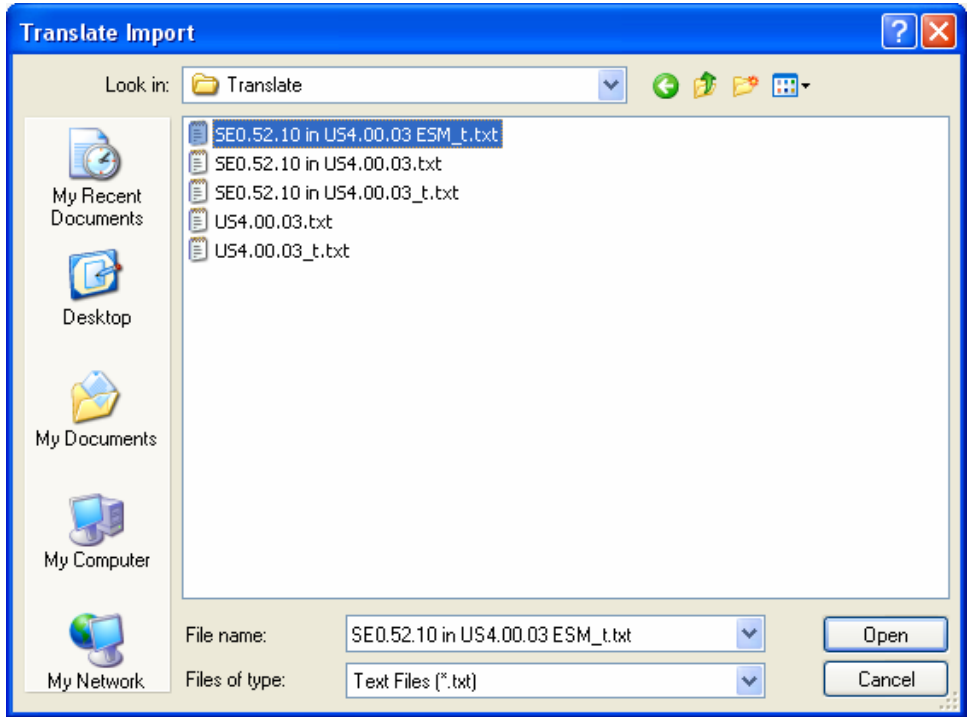
*The new Language Textfile has been exported.*

Open the database with the add-on.  
Open the Objects Designer and filter on the Add-On Objects.  
Mark all the objects and use Tools, Translation, Import



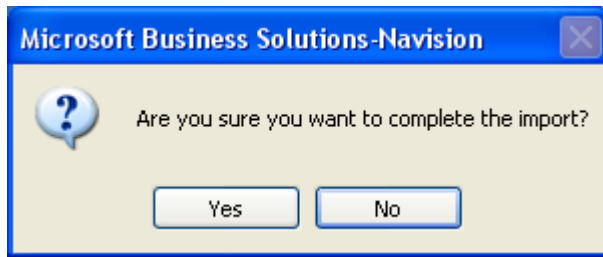
*The translate option is selected after marking all the objects the translation should be used in. It is possible to mark a single object or a whole range for the add-on.*

Browse to the file with the translated add-on



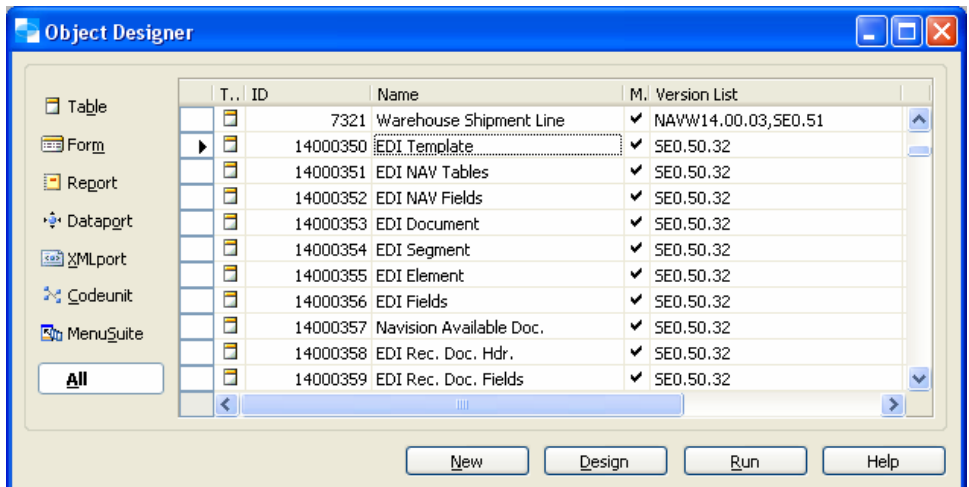
*The exported file from the Mergetool is marked.*

Click Open and wait for the progress bar to end..Confirm the Import of the texts.



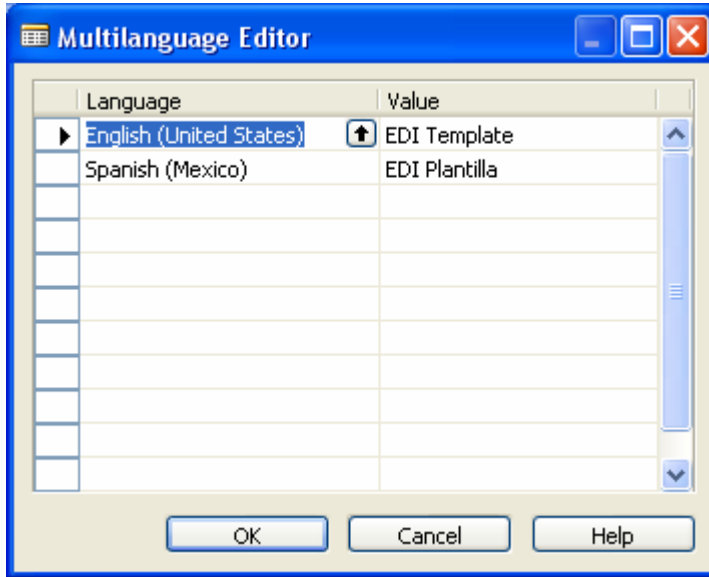
*After running the import will it be possible to confirm the import.*

All the objects are now modified with the new texts.



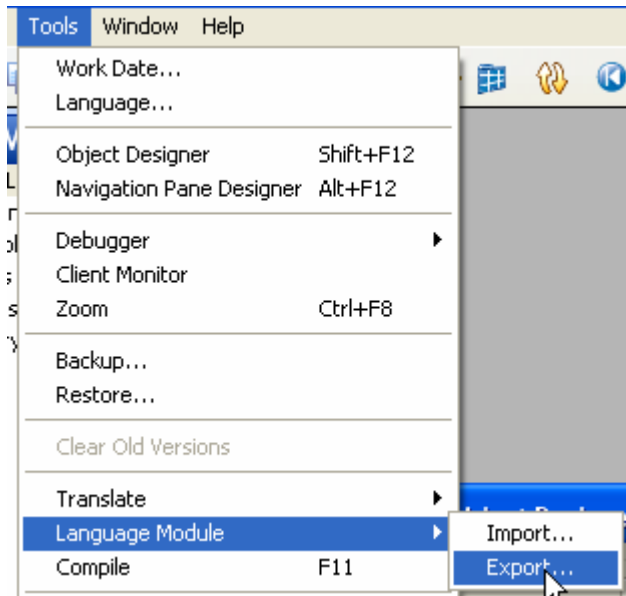
*The objects have been modified with the new texts. Even if the objects is not touched by the imported texts will the Modified and timestamp be changed. The Mergetool can be used to find the objects that has been changed by the import. This can be import for a second translation that was only done partially the first time.*

If the table is opened will the new table caption be shown.



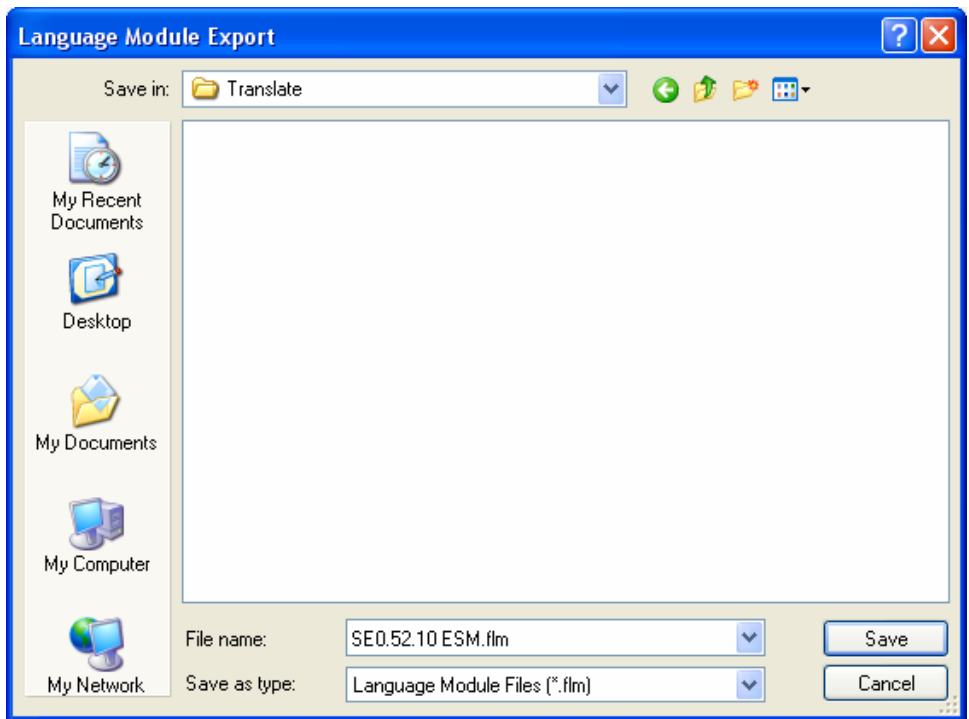
*The ESM Caption has been added to the object.*

To create a Language module could the language have been deleted from the database before importing the translated texts. In that way would the new language module not contain the texts from base Navision. To export a Language Module select all the Add-On objects and use Tools, Language Module, Export



*The menu to export the Language Module*

Create a new file name. In most cases will a Language Module be able to be used for all versions of an add-on. If the newest version has more texts will they be skipped during import for an older version.



*The new name has been created. Try keep version on translations as on objects.*

The new language module has been created.  
The files in the directory after export the Language Module.

Name	Size
MergetoolPM66Public.fdb	1,000,000 KB
SEO.52.10 ESM.flm	771 KB
SEO.52.10 in US4.00.03 database.fdb	300,000 KB
SEO.52.10 in US4.00.03 ESM_t.txt	835 KB
SEO.52.10 in US4.00.03.fob	29,736 KB
SEO.52.10 in US4.00.03.txt	20,045 KB
SEO.52.10 in US4.00.03_t.txt	3,848 KB
US4.00.03.txt	69,378 KB
US4.00.03_t.txt	16,340 KB
US 4.00.03 database.fdb	200,000 KB

*The Language module has been exported.*

## ***Suggestions when translating***

Always look at the length of the text. Do not use extensive long texts for Tables, Objects and Fields.

Use Capital Letters same way as Navision is using them.

Create standard abbreviations.

Treat a translation like a product version. Keep versions. It is possible to import already translated texts as the beginning for a version. Or use the function "Use Translation from Other" multiple times.

Start with the Table Names, Create a Terminology List, Translate the Objects, Fields, and Option Strings, Verify that the terminology is good and consistent. Then translate the message and other fixed texts.

Understand the way the "Token" field is build.

How to estimate time for translation. After translating a couple of products will the time break down be like this.

Translate Tables and create consistent terminology 20 %

Translate Objects, Fields and Captions 40 %

Translate Messages and Errors 20 %

Testing and verification 20 %

In average will it be possible to translate between 50-100 token per hour depending on the knowledge of the translation tool, the application being translated and base Navision.

It is not possible to translate Tables, Objects, Fields, and Option Strings without knowing Navision and the application. Messages and error text can be done by other based on the terminology list and lookup to other translations.

The "Translation Add-On Code" can be used for dividing the project between several people.

Never underestimate the task of translation. A bad or inconsistent translation can make the product useless for the end-user.

